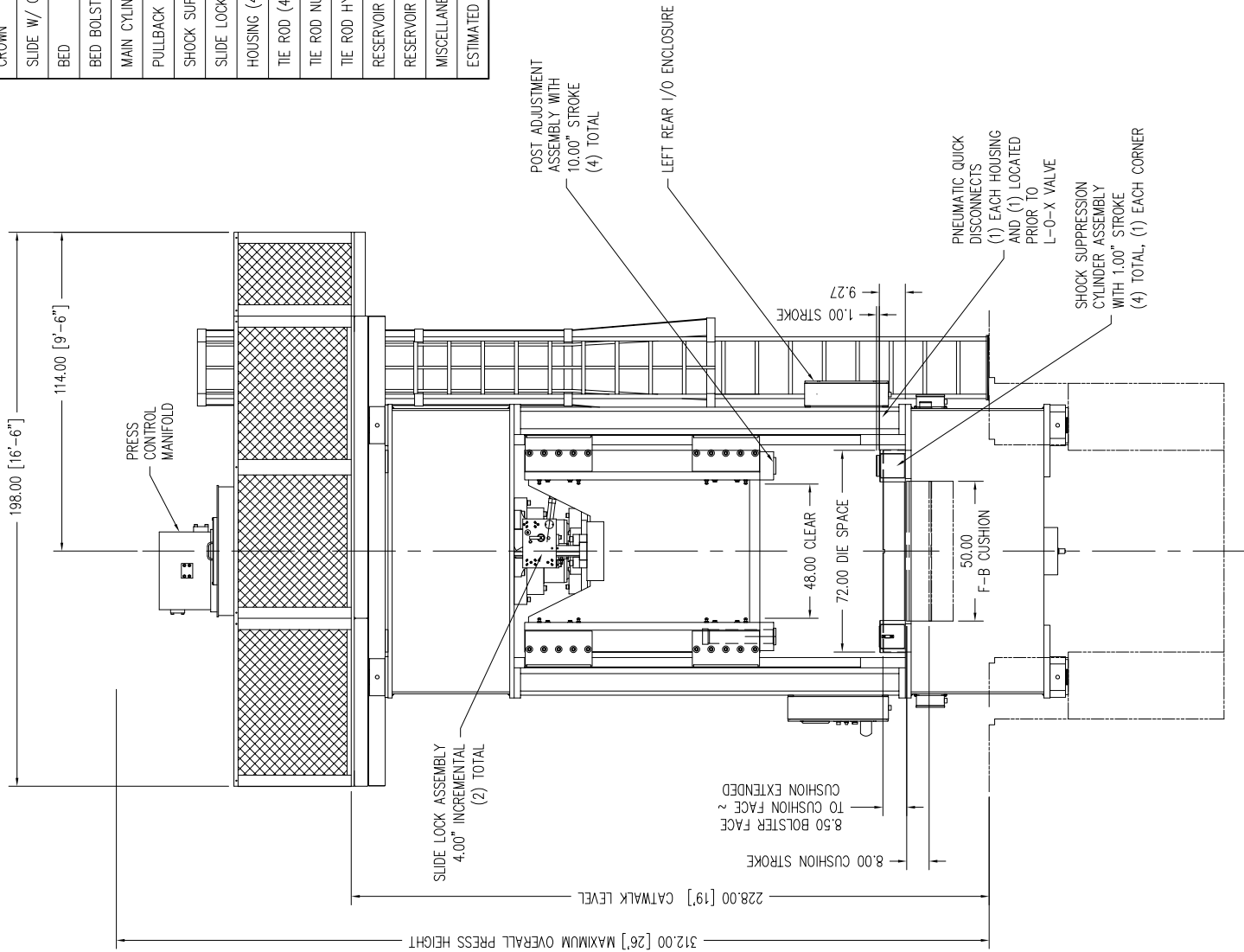
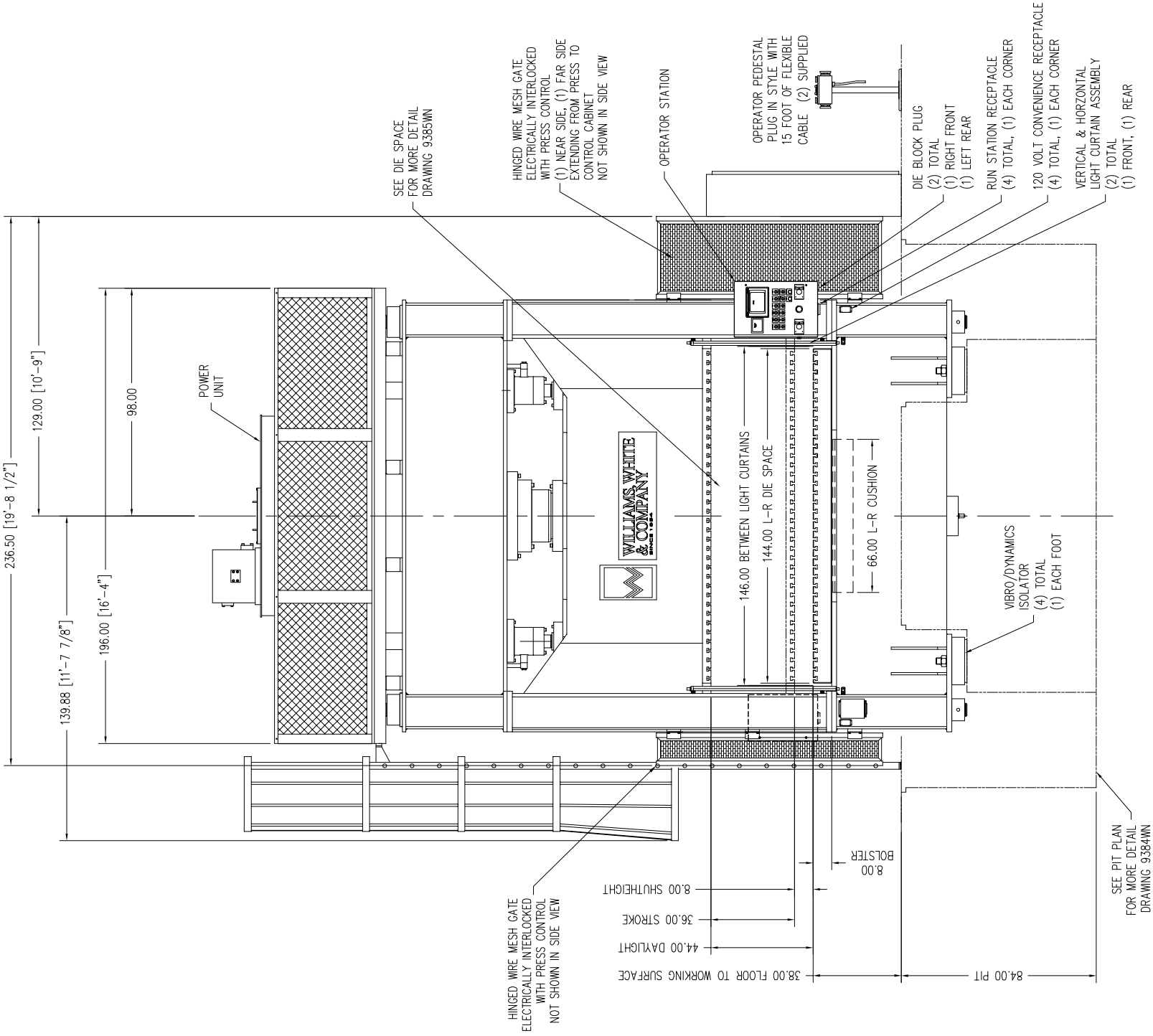


REVISIONS			
ZONE	REV.	BY:	DATE:
---	--	---	---
DESCRIPTION			
XX/XX/XX			
CHECKED BY:			
---			

COMPONENT WEIGHTS, LBS	
CROWN	32,000
SLIDE W/ GBS	44,000
BED	46,000
BED BOLSTER	19,300
MAIN CYLINDER ASSEMBLY	15,500
PULLBACK CYLINDER ASS'Y (2)	4,800
SHOCK SUPPRESSION ASSEMBLY (4)	1,600
SLIDE LOCK ASSEMBLY (2)	1,500
HOUSING (4)	15,600
TIE ROD (4)	6,600
TIE ROD NUT (4)	300
TIE ROD HYD. NUT ASSEMBLY (4)	700
RESERVOIR AND MANIFOLDS, INC. FLUID	30,000
RESERVOIR BRACKET (2) (1,275# EA.)	2,550
MISCELLANEOUS	9,550
ESTIMATED TOTAL WEIGHT	230,000



PRESS CAPACITIES, US TONS		PRESS SPEEDS (IN/MIN)		UTILITIES (ESTIMATED)	
PRESSING	60 - 600	FAST CLOSE	1000	ELECTRICAL:	460 VOLTS, 3 PHASE, 60 HZ.
STRIPPING	20	PRESSING	6 - 65		270 TOTAL FLA
NET LIFT AT FAST OPEN	10	STRIPPING	35 - 350		248 FLA LARGEST MOTOR LOAD
NET LIFT AT DIE SET UP	20	FAST OPEN	700	WATER:	20 GPM TOTAL
BED CUSHION	20 - 200	BED CUSHION RESET	25 - 250		85° F. MAXIMUM AT INLET
BED CUSHION EJECTOR	20			PNEUMATIC:	80 PSI, AS REQUIRED
				HYD. FLUID:	800 GALLON CAPACITY
					ISO VG-68 HYDRAULIC FLUID
					RECOMMENDED

WILLIAMS, WHITE & CO.

Moine, Illinois - USA

600 TON HYDRAULIC  
METAL WORKING PRESS  
GENERAL ARRANGEMENT

NAME

DESIGNED DATE 5/3/12

DRAWN DATE 6/2/12

CHECKED DATE

THIS DRAWING IS THE PROPERTY  
OF WILLIAMS, WHITE & COMPANY  
IS NOT TO BE USED IN ANY  
MANNER DETRIMENTAL TO OUR  
INTERESTS.

THIRD ANGLE PROJECTION

DECIMALS X.X ± 0.1  
DECIMALS X.XX ± 0.03  
DECIMALS X.XXX ± 0.005  
ANGLES ± 0.5°

LIMITS ON ALL FINISHED DIMENSIONS  
UNLESS OTHERWISE SPECIFIED  
DIMENSIONS ARE IN INCHES  
✓ MACHINED SURFACES 125 RMS  
REMOVE ALL SHARP EDGES AND BURRS  
∠ 7 FLATNESS .001 IN. PER FOOT

SIZE FILE D  
DRAWING NO. 9383WN  
SCALE 1/30 JOB NUMBER C-4894 SHEET 01 OF 01

A

8

7

6

5

4

3

2

1